



Invited Commentary

Imaging Biomarkers for Precision Medicine in Locally Advanced Breast Cancer

William T. Tran, MRT(T), MSc, PhD^{abc*}, Charmaine Childs, PhD^c, Heidi Probst, PhD^c,
Golnaz Farhat, PhD^{ab}, and Gregory J. Czarnota, MD, PhD^{ab}

^a Department of Radiation Oncology, Sunnybrook Health Sciences Centre, Toronto, Canada

^b Physical Sciences, Sunnybrook Research Institute, Toronto, Canada

^c Faculty of Health and Wellbeing, Sheffield Hallam University, Sheffield, UK

ABSTRACT

Guidelines from the American National Comprehensive Cancer Network recommend neoadjuvant chemotherapy to patients with locally advanced breast cancer (LABC) to downstage tumours before surgery. However, only a small fraction (15%–17%) of LABC patients achieve pathological complete response (pCR); that is, no residual tumour in the breast, after treatment. Measuring tumour response during neoadjuvant chemotherapy can potentially help physicians adapt treatment, thus potentially improving the pCR rate. Recently, imaging biomarkers that are used to measure the tumour's functional and biological features have been studied as pretreatment markers for pCR or as an indicator for intratreatment tumour response. Also, imaging biomarkers have been the focus of intense research to characterise tumour heterogeneity as well as to advance our understanding of the principle

mechanisms behind chemoresistance. Advances in investigational radiology are moving rapidly to high-resolution imaging, capturing metabolic data, and performing tissue characterisation and statistical modelling of imaging biomarkers, with an end point of personalised medicine in breast cancer treatment. In this commentary, we present studies within the framework of imaging biomarkers used to measure breast tumour response to chemotherapy. Current studies are showing that significant progress has been made in the accuracy of measuring tumour response either before or during chemotherapy, yet the challenges at the forefront of these works include translational gaps such as needing large-scale clinical trials for validation and standardisation of imaging methods. However, the ongoing research is showing that imaging biomarkers may play an important role in personalised treatments for LABC.

Keywords: Imaging biomarkers; chemotherapy response; locally advanced breast cancer

Introduction and Background

Recent guidelines by the National Comprehensive Cancer Network define locally advanced breast cancer (LABC) as stage III breast cancer [1]. Thus, large tumours greater than 5 cm with regional lymph node involvement or inoperable breast cancer defined as having skin and/or chest wall involvement are locally advanced [1, 2]. Incidence rates of LABC in the United States accounted for 12.4% of new breast cancer cases in 2015 and 8.5% of cases in the United Kingdom [3, 4]. Survival data from the SEER registry (Statistics, Epidemiology, and End-Results Program) in the United States have indicated poor survival outcomes [5, 6]; mortality rates were 52% for stage IIIA breast cancer and 48% for stage IIIB

disease [5]. Similarly, data from the United Kingdom showed that between 2002 and 2006, only 55.1% of women with stage III breast cancer survived beyond 5 years (recent data unavailable) [7]. Poor survival outcomes are caused by factors associated with genetics, tumour heterogeneity, vascularity, oxygenation, and some intrinsic molecular features such as oestrogen receptor (ER) and human epidermal growth factor receptor-2 (Her2) expression.

The recommended treatment course for LABC is neoadjuvant chemotherapy (NAC), followed by surgery, then radiation [1, 8]. Studies emerged in the 1970s demonstrating the benefit of preoperative chemotherapy to downstage tumours before surgery, since reducing the tumour size and extent can make surgical excision possible [9]. The additional benefit of using NAC includes enabling lumpectomy rather than total mastectomy, if for example there are clinical indications (tumour size and margins, nodal status, and patient preference after NAC) [1, 9–12]. Neoadjuvant chemotherapy is also desirable since monitoring tumour response during therapy would allow

* Corresponding author: William T. Tran, MRT(T), MSc, PhD, Department of Radiation Oncology, Sunnybrook Health Sciences Centre, Toronto, Ontario, Canada M5S3K5.

E-mail address: william.tran@sunnybrook.ca (W.T. Tran).

potentially adapting therapies based on clinical response [13, 14]. It has been shown that pathological complete response (pCR), defined as having no residual tumour after NAC, can serve as a prognostic indicator for survival and is supported by work from the German Breast Group who reported improved disease-free survival for luminal B/Her2-, Her2+ (nonluminal), and triple negative (ER-/PR-/Her2-) breast cancers that achieve pCR [15]. Furthermore, a meta-analysis of 3,182 LABC patients demonstrated improved survival in patients who achieved pCR after NAC (overall survival = 2.3–7.6 years) [16]. In another study, 87% of pCR patients survived beyond 5 years, in comparison to patients who demonstrated partial or no response [17]. The results of these studies suggest that pathology end points after NAC can provide vital information on survival outcomes and thus, pCR is, in part, the desired clinical outcome for administering NAC. However, despite the significant improvements in treatment strategies over past decades, only a small fraction of patients will achieve pCR. Previous studies have reported pCR rates of only 15.2%–17.4% following NAC [16, 18]. With less than a quarter of treated patients achieving a pCR, new ways of improving outcome and survival for patients with LABC are a real clinical challenge for the future.

To address these challenges, there has been research interests in exploring new ways to assess intratreatment responses to NAC as well in finding ways to predict the treatment response even before the use of chemotherapy; in other words, to make a prognosis for the presumed efficacy of the treatment. A deeper understanding of tumour behaviour and customising treatments based on genetic, patient, and other biological information are referred to as precision medicine. The tailoring of treatments is also termed personalised medicine.

To help achieve this, a greater understanding is needed of tumour biology; the way the tumour influences for example, angiogenesis, drives cell proliferation and ultimately how the tumour cells die from chemotherapy are important considerations for precision medicine in oncology. In this commentary, we present past and current studies focusing on imaging biomarkers in breast cancer.

Hallmarks of Chemoresistance and Chemoefficacy

Intertumour and Intratumour Heterogeneity Contributes to Chemoresistance

Intertumour heterogeneity is, in part, caused by intrinsic variances in molecular features such as ER, progesterone receptor, and Her2. Data from 50,571 women in the United States indicated that 72.7% of women exhibit luminal A-like breast cancer; while 12.2% express basal-like breast cancers. A smaller portion of patients exhibit luminal B-like breast cancer (10.3%), whereas only 4.6% of all breast cancer patients have Her2 overexpressed (Her2+) breast cancer [19]. These differences in tumour profiles can require different targeted therapies, such as trastuzumab in the case of Her2 overexpressed tumours. Breast cancer subtypes also demonstrate

variable responses to NAC [15, 20, 21]. Reports from over 6,000 patients have indicated that basal-type and HER2+ breast cancers have the highest rate of pCR to anthracycline- and taxane-based chemotherapies. In contrast, luminal A and luminal B breast cancers (ie, ER+, PR+) are highly resistant to chemotherapy [15]. Rodent models have demonstrated that luminal breast cancer cells exhibit stem cell-like behaviours that are genetically driven for tumour cell immortality, higher rates of differentiation, and rapid proliferation [22]. Some studies have also suggested that basal-type tumours have dysfunctional cell-repair mechanisms in comparison to luminal A and luminal B tumours that make it more susceptible to chemotherapy-induced DNA damage [23].

Intratour heterogeneity is another treatment resistance challenge. It is characterised as a mixture of cells and stromal features that constitute tumour composition. Tumours are also constructed from a variety of other cell types such as fibroblasts, immune cells, adipocytes, and normal breast epithelial cells [24, 25]. The complexity of intratumour heterogeneity is confounded by morphologic differences such as enlarged or shrunken cell sizes from tumour cell proliferation and cycling. These events also cause substructural alterations that result in condensed nuclear bodies and organelle reorganisation [26]. Taken together, tumours are composed of disorganised and aberrant cells, and circulating biomolecules that are “woven” into a turbulent vascular scaffold and environment. Other physiological conditions that lead to intratumour heterogeneity include fluctuating interstitial fluid, variable vascular perfusion, and circulating biomolecules [27]. These aberrations inhibit effective delivery of chemotherapies and, thus, result in variable treatment response. Taken together, the heterogeneous and tortuous tumour matrix is a significant treatment challenge in breast cancer [28].

Mechanisms of Chemoefficacy

One mechanism by which chemotherapy agents exert their therapeutic effect is by committing tumour cells to apoptosis [29, 30]. In comparison to other forms of cell death, such as necrosis, apoptotic cell death is energy dependent, genetically controlled and morphologically distinct (ie, developing apoptotic bodies, cell shrinking, and nuclear condensation) (Figure 1) [31]. Apoptosis has been identified in primary breast tumours treated with NAC in situ. Studies by Chang et al [32] and Ellis et al [33] demonstrated that there was an increase in apoptosis in responsive tumours and detected as early as 24 hours after the administration of chemotherapy. Chang et al [32] showed that increased apoptosis was linked to pCR where there was no residual or palpable disease after therapy. Buchholz et al (2003) also measured the apoptotic activity in breast tumours after 48 hours of chemotherapy. Patients who had a 25% increase in the apoptotic activity had gone on to achieve pCR. The apoptotic activity was significantly different to patients who did not achieve pCR ($P < .015$) [34]. Although only a small number of clinical studies have examined serial breast tumour biopsies to measure apoptosis in situ, the

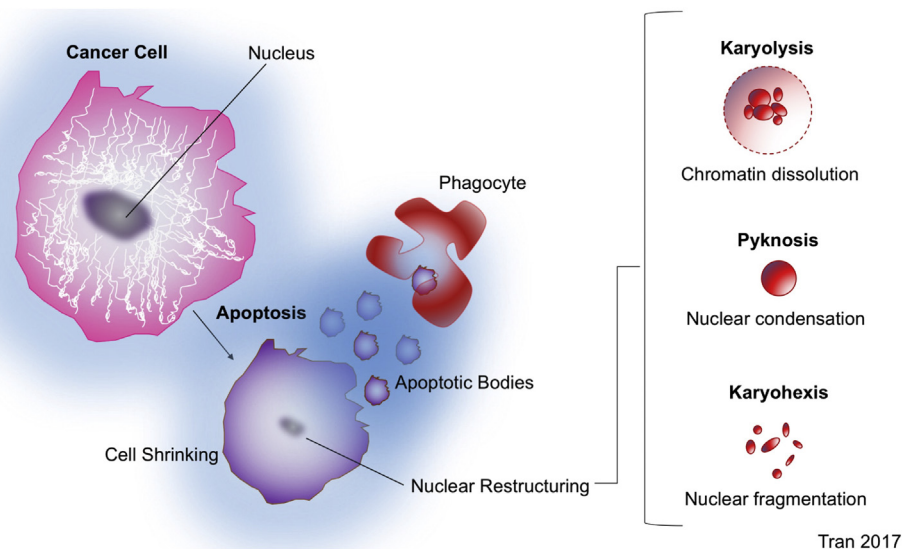


Figure 1. Apoptosis in cancer cells. Apoptosis is characterized as an energy-dependent mechanism where cells undergo programmed morphologic changes. Chemotherapies induce apoptosis in tumour cells, and this results in cell shrinking and nuclear restructuring such as karyolysis, pyknosis, and karyohehexis.

findings to date have indicated agreement with laboratory-based experiments for other tumour types in vitro [35–37].

Alterations in the tumour’s vascular organisation are also important hallmarks of chemoefficacy. An important property of malignancies is the abnormal vascular architecture, which contributes to a spatially heterogeneous environment [38]. The vascular morphology and layout have been well studied; blood vessels are disorganised, distributed unevenly, immature and leaky, which also affects the tumour’s response to treatment [39]. The tortuous vessel formations have been shown previously to inhibit drug efficacy by secreting cell-protective factors against chemotherapy insult [40, 41]. Additionally, abnormal morphologies such as variable vessel diameters and weak junctions in the vessel walls have been demonstrated to inhibit efficacious drug delivery since leaky vessels mitigate drug concentrations in tumours for effective therapeutic effect [42, 43]. Additionally, the uneven vascular scaffold creates areas with variable and high interstitial fluid pressure, which resists the transport of cytotoxic agents into the stroma [28, 41, 44]. Solid tumours that respond to chemotherapy exhibit characteristic patterns in their vessel reorganisation [38]. Jain et al [38] described these patterns as vascular “normalisation” by which the vascular architecture is reconfigured to eliminate inefficient, saccular, leaky, and immature vessel formations (Figure 2). This results in improved oxygen delivery and cytotoxic efficacy. In highly responsive tumours, the vasculature eventually regresses and limits the nutrient supply to tumour cells [45]. The net effect is a regression in the vascular density in tumours. Consequently, this leads to spatial and structural changes in the tumour.

Taken together, the important characteristics of tumour response to chemotherapy include vascular normalisation and regression, cell death, and changes in the tissue composition. These characteristics are the focus of detection using imaging biomarkers.

Imaging Biomarkers as Indicators for Chemoresponse

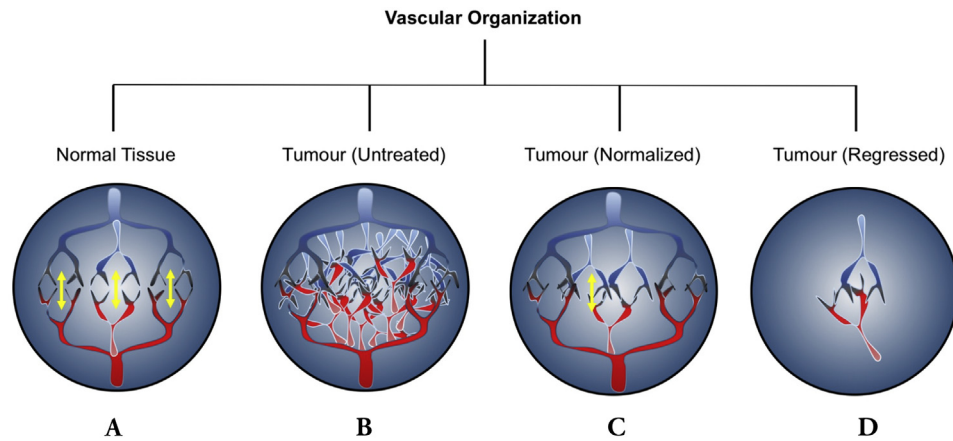
Conventional Imaging Methods

Conventional imaging from magnetic resonance imaging (MRI), computed tomography, and B-mode ultrasound (US) is used to measure tumour size changes during NAC. Radiological response criteria are graded using RECIST 1.1 (Response Criteria in Solid Tumors) guidelines [46]. However, major limitations for measuring tumour size changes include (1) dependency on user expertise to identify the lesion; (2) distinguishing tumour boundaries on multiple scan planes in the case of MRI and computed tomography; (3) a change in the tumour’s size may take several weeks before it is detectable, which limits early detection; and (4) size measurements may be conflated with fibrosis, collagen, fatty tissue, and inflammation in the breast.

Quantitative imaging biomarkers address the limitations associated with conventional imaging. Quantitative imaging biomarker techniques measure the biological and functional tumour features previously outlined such as cell metabolism, cell death, and vascular reorganisation. The overall purpose of investigating imaging biomarkers in oncological studies is to achieve optimal accuracy of imaging biomarker features with pathology end points such as pCR. Recent imaging methods are described below, and biomarker measurements are outlined in Table 1.

MRI Biomarkers

MRI-based imaging biomarkers can be extracted from diffusion-weighted imaging, dynamic contrast-enhanced imaging (DCE-MRI), blood-oxygen level-dependent imaging, and MRI-spectroscopy. These techniques are capable of mapping tumour oxygenation, vascularisation, metabolism,



Tran 2017

Figure 2. A comparison of the vascular organization. A, Normal tissue exhibits well-organized vasculature, which permit exchange of biomolecules and gas (arrows). B, Untreated tumours show high-density vasculature and do not permit free exchange of biomolecules and gasses. C, Normalized tumours demonstrate greater organization closer to that of normal tissue. D, In regressed tumours, the vasculature may be absent or minimal. (Figure adapted from Jain et al, 2005 [45]).

and the extracellular matrix as response markers to NAC in breast cancer (Table 1). Diffusion-weighted MR measures the diffusion of water molecules (ie, Brownian motion) in tissue [47, 48]. Tissue contrast can be displayed in DW-MRI imaging based on areas of high and low water diffusion, where areas of low water motion (ie, tumours) demonstrate an enhanced signal. Previous studies have demonstrated that areas with low water motion are associated with malignant tissue due to densely arranged cells which limit the motion of water in the extracellular space [47]. Extrinsic contrast imaging techniques include DCE-MRI which detects the concentration of an injected contrast agent (gadolinium chelate) in the intravascular and extravascular space using primarily T1-weighted signals [48]. DCE-MRI images provide information on tumour vascularity and blood flow and measure the gadolinium “wash-in” and “wash-out.” Tumours preferentially accumulate gadolinium from an increased vascular supply compared to normal tissue and therefore demonstrate an enhanced signal in MRI [68]. Blood-oxygen level-dependent imaging is also used to measure the tumour vascularity and tumour oxygenation. This is accomplished by detecting deoxyhemoglobin, which is paramagnetic and therefore results in signal loss in T2-weighted images [51].

Positron-Emission Tomography

Positron-emission tomography (PET) imaging monitors metabolic activity by tracking the cellular uptake of a glucose analogue, [¹⁸F]-fluorodeoxyglucose (FDG). FDG is injected intravenously, transported into cells like glucose, and is labelled with a radioactive tracer that demonstrates radioactive decay, permitting PET imaging to map metabolic activity in tissue. Increased FDG uptake (standard uptake value, SUV) has been demonstrated in tumours since tumour metabolism is greater compared to normal tissue. PET imaging

can, therefore, serve to identify the extent of malignancies [69]. PET imaging is achieved with the release of a pair of annihilation photons and is detected by a photon-detection device during radioactive decay; this is known as positron-electron annihilation. Another radiotracer used in PET is the radionuclide ¹⁵O-H₂O, which is used to measure tumour blood flow; where the distribution of water can be equated to blood activity in blood vessels [56]. Previous work from Duch et al [70] showed that the intratreatment change in SUV (Δ SUV, 2 cycles of chemotherapy) differentiated between pathologic response groups (responders vs. nonresponders) with a sensitivity of 77% and specificity of 80%, using a cutoff value of 40%.

Diffuse Optical Spectroscopy

Diffuse optical spectroscopy (DOS) imaging can measure tumour response to chemotherapy by focusing on changes in tissue composition [71–73]. Maps of tumour physiological features, such as hemoglobin, are computed from tissue optical properties that are based on near-infrared optical scattering and absorption within the near-infrared spectrum (600–1,100 nm) [57]. For breast tissue, significant optical absorbers include oxyhemoglobin, deoxyhemoglobin, water, and lipids [57]. Chromophore concentrations can be estimated by measuring the absorption coefficient [μ_a] and using Beer’s law equation [59]. Also, tissue optical parameters such as the reduced scattering coefficient [μ'_s] can provide additional information on tissue microstructure ($\sim 0.2 \mu\text{m}$), corresponding to optical scattering effects from mitochondria and the cell nucleus [57, 74]. Other DOS parameters, such as the scatter power and scatter amplitude, calculated by using the power-law function, are representative of the tissue’s substructure, which is related to cellularity, cell arrangement, and light-scatterer spatial distributions [61]. As a result, DOS imaging can

Table 1
Imaging Biomarker Studies Have Included MRI, PET Imaging, DOS, and Ultrasound-Based Imaging

Technique	Biomarker Measurements	Treatment Points Studied	Ref.
Magnetic resonance imaging			
DWI-MRI	<ul style="list-style-type: none"> • Extracellular water motion • Tumour cell density • Tissue microstructure • Cell membrane integrity • Cell membrane permeability 	<ul style="list-style-type: none"> • Pretreatment • Intratreatment • Postchemotherapy 	[47–54]
DCE-MRI	<ul style="list-style-type: none"> • Vascular permeability • Dynamic blood flow 		
BOLD	<ul style="list-style-type: none"> • Tumour oxygenation • Tumour vascularity • Angiogenesis • Blood volume • Blood flow 		
Spectroscopy	<ul style="list-style-type: none"> • Reduction in mitotic count • Tumour cellularity • Cell membrane integrity • Tumour metabolism • Tissue composition (lipid) 		
Positron-emission tomography			
¹⁸ F-FDG	<ul style="list-style-type: none"> • Tumour metabolism 	<ul style="list-style-type: none"> • Pretreatment • Intratreatment • Postchemotherapy 	[55, 56]
¹⁵ O-H ₂ O	<ul style="list-style-type: none"> • Tumour blood flow 		
Diffuse optical spectroscopy			
DOS	<ul style="list-style-type: none"> • Metabolism • Cell activity • Vascular density • Oedema • Breast tissue composition • Cellularity • Cell death and morphology • Tissue contrast • Hypoxia 	<ul style="list-style-type: none"> • Pretreatment • Intratreatment • Postchemotherapy 	[57–61]
Ultrasound			
Elastography	<ul style="list-style-type: none"> • Tumour progression • Extracellular matrix • Collagen crosslinking • Tissue composition (fibrosis) 	<ul style="list-style-type: none"> • Pretreatment • Intratreatment • Postchemotherapy 	[62–67]
Power Doppler	<ul style="list-style-type: none"> • Vascular blood flow • Blood perfusion • Vascularity 		
QUS	<ul style="list-style-type: none"> • Tumour cell death (apoptosis) • Cell morphology and distribution 		

BOLD, blood-oxygen level-dependent; DCE-MRI, dynamic contrast-enhanced imaging; DOS, diffuse optical spectroscopy; DWI-MRI, diffusion-weighted imaging; FDG, fluorodeoxyglucose; MRI, magnetic resonance imaging; PET, positron-emission tomography; QUS, quantitative ultrasound.

The studies have included response assessment using various biological features at various stages of chemotherapy treatment: before treatment (pretreatment), intratreatment, and posttreatment.

demonstrate a good sensitivity to the biochemical characteristics of breast tumours that undergo changes from NAC. Previous work by Cerussi et al [59] indicated that hemoglobin-based parameters demonstrated significant differences between pCR vs. non-pCR patients ($P < .05$). Early indicators of treatment response were reported by Robyler et al [71] and showed an “oxyhemoglobin flare” in responders after 24 hours of treatment. In another study by Ueda et al [75], the baseline oxygen saturation demonstrated significant differences between pCR and non-pCR patients ($P < .01$) and corresponded to a sensitivity and specificity of 75.0% and 73.3%, respectively.

US Imaging Biomarkers

US imaging biomarkers are obtained by mechanical imaging such as elastography (which is considered semiquantitative) or functional imaging such as power Doppler US and quantitative ultrasound (QUS) spectroscopy. US elastography measures tissue stiffness, which characterises tissue biomechanical properties. Tumours are “stiffer” than the surrounding normal parenchyma because they are comprised of densely populated and rapidly dividing cells, as well as increased vasculature and fibroglandular components that alter its mechanical properties [62, 63, 76]. Tissue stiffness

can be measured in terms of tissue stress and strain using shear-wave elastography or compression-based elastography. Evans et al [64] reported that stiffer tumours were significantly correlated to a higher residual cancer burden index (RCBI), which indicates poor pathologic response at the end of chemotherapy (Pearson correlation coefficient = 0.23, $P < .004$).

Functional US-based imaging techniques include power Doppler imaging that assess tumour vasculature from the frequency shift and amplitude (power) of the US backscatter signal from scatterers in the blood vessels [77]. An emerging field includes quantitative US spectroscopy, which uses the spectral information of the US radiofrequency signals to characterise morphologic changes in tumour cells associated with apoptosis caused by chemotherapy [37, 78]. To date, QUS has been used to measure intratreatment response, showing significant changes in the spectral parameters for chemoresponding patients as early as 1 week after treatment initiation [79]. Also, recent results have demonstrated that pretreatment QUS parameters can predict NAC response in patients with an accuracy of 88%, while demonstrating a high correlation to survival outcomes [80].

Image Texture Analysis and Machine Learning

Other imaging biomarker features can be extracted from image texture analysis. Texture analysis refers to mathematical methods that can apply second-order statistical methods to yield texture features of an image. Feature-extraction methods, such as those based on grey-level cooccurrence matrices (GLCM), can be applied to compute the probabilities of relative pixel intensities of images from the spatial distribution of their voxels [81]. This is useful for quantifying image heterogeneities, and their application has extended to discriminating benign vs. malignant breast lesions in breast radiographs [82]. Texture analysis has also been useful in X-ray mammography [83], MRI [84, 85], PET [86], and US [87] to identify malignant lesions and for discriminating and characterising various tissue types [88]. In other breast studies, GLCM analysis has been under investigation for utility to classify benign and malignant lesions using planar (2D) and volumetric (3D) MRI images [84, 89]. Additionally, GLCM analysis has been used to segment lesion borders of stellate (malignant) breast masses [90].

For therapy evaluation, texture analysis has also been used to discriminate breast tumour response to NAC from various imaging modalities [82, 91, 92]. Texture features of the image carry important information about the tumour's properties, corresponding to heterogeneity within the tumour itself [90]. Such techniques have been applied with computer-aided, machine-learning techniques for statistical modelling [93]. Machine-learning classification algorithms include support vector machines, k-nearest neighbour, naïve Bayes, and artificial neural networks that can be used to classify response groups by pattern recognition and spatial probabilities within a feature space. These methods have recently been applied to QUS

imaging and have demonstrated high classification accuracy in responders and nonresponders at early phases of NAC treatment [79]. These previous findings suggested that textural features can provide information on the microstructural biological characteristics carried in the parametric layout, not otherwise detected using the mean parametric measurements [79].

Status of Imaging Biomarkers for Personalised Medicine in Breast Cancer

Adopting imaging biomarkers as a decision-making tool in the clinic involves several steps that originate with laboratory investigations and following the translational research pathway progress to clinical trials. Here, it is pertinent to discuss the current demand from patients and clinicians for imaging biomarkers in the clinic, the translational obstacles, and how generalisable imaging biomarker models are for measuring breast cancer response to NAC. The demand for imaging biomarkers has been highlighted recently by a UK-based working group that identified critical research gaps and translational priorities for breast cancer. Their report highlighted the importance of exploiting both biospecimen-based markers and imaging for guiding breast cancer treatment. Below are the major considerations outlined by their group [94]:

1. Selection of therapies should be offered on an individual basis and using level-one evidence. Personalised treatments are the best approach. Important considerations include optimising the treatment time course from individual tumour and patient data. Currently, overtreatment is a clinical challenge.
2. An assessment of the tumour's underlying biology is essential. Tumour metrics may help assess the patient's metastatic risk and predict drug resistance. The tumour's behaviours from its cellular characteristics, molecular features, angiogenic pathways, and stromal conditions (ie, hypoxia, altered metabolism) may aid in understanding the impact on therapeutic interventions. This may be achieved by using functional and metabolic medical imaging modalities.
3. Clinical decision-making tools will be integral in the management and treatment of breast cancer patients. For example, imaging biomarkers could be used to predict prognosis and response to chemotherapy. Imaging modalities will permit potentially noninvasive, serial measurements that monitor the dynamic tumour changes over time.
4. High-risk populations include triple negative breast cancer patients, and research needs to address prognostic and predictive biomarkers for this patient population. In general, tumour heterogeneity is a treatment challenge, and stratification of patients is needed in future studies for better treatment strategies.
5. Both clinical and financial effectiveness should be considered while implementing new decision-making tools for clinical use.

The need for biomarkers in medicine has been identified for decades. In the early 2000s, the human genome project was completed to identify and map out thousands of genes in human cells [95, 96]. Since then, great efforts have been made in cataloguing and identifying gene signatures involved in disease progression, drug metabolism, and treatment resistance across several disorders like cardiovascular disease, infectious diseases, and cancer [97]. A major focus in genomic oncology has been to identify predictors for chemotherapy resistance in breast cancer [97, 98]. Indeed, thousands of gene markers have been studied as predictors to therapy response in cancer. Yet, one of the most notable works includes the validation of a 21-gene assay (Oncotype-DX) that predicts the probability that patients would benefit from adjuvant chemotherapy. The assay includes genes that have been shown to potentiate higher prognostic risk factors [98]. The 21-gene signatures have undergone validation in over 10,000 patients. The NSABP study B-14 trial demonstrated that Oncotype-DX was shown to predict recurrence in patients treated with tamoxifen [99], while a parallel study (NSABP study B-20) showed the benefit of the assay for predicting chemotherapy response [100]. The benefits from Oncotype-DX biomarker testing are recognised as useful for a subset of breast patients, namely, in hormone receptor-positive, Her2-negative, axillary node-negative breast cancer [101, 102]. The Oncotype-DX assay is one example of how specimen-derived biomarker discoveries have been adopted by clinicians to guide treatment and enhance personalised medicine. It also demonstrates the several validation hurdles that biomarker studies undergo before clinical acceptance and that biomarkers themselves may not be generalisable for all breast cancer subtypes. In comparison to imaging biomarkers, no such imaging biomarkers have reached the clinical adoption stage comparable to biospecimen biomarkers like Oncotype-DX.

Despite the significant efforts to investigate imaging biomarkers for clinical use, many of the identified biomarkers have not surpassed initial research hypothesis testing; thus, never having reached large-scale clinical trials for robust validation. In fact, emerging research that could potentially guide treatments often falls through two major translational gaps [103]. These gaps were previously outlined by Cancer Research UK and the European Organization for Research and Treatment of Cancer working group; specifically: (1) validation of the biomarkers through initial scientific testing (ie, are the imaging biomarkers robustly tested and capable of answering the scientific or medical hypothesis?) and (2) validation of the imaging biomarkers as a clinical decision tool (ie, have the imaging biomarkers undergone the appropriate clinical trial to be used and generalised for patients?). Integrating and using imaging biomarkers in practice necessitate marker validation, generalisability, and cost-benefit analysis [94, 103]. To date, imaging biomarkers have surpassed the first translational gap to address scientific hypothesis testing but have yet to succeed in the subsequent clinical research testing stage for robust validation. Major limitations include

repeatability and reproducibility of results and standardizing tumour response evaluation criteria.

Additionally, more work is needed to identify optimal imaging biomarkers and establish imaging protocols, time intervals, and appropriate cut-off points for response classification.

Taken together, imaging biomarkers are proving to have great potential for use in LABC treatment. The limitations for routine clinical use involve the need for multicentre trials for validation and improvements on study design and laying out a standard imaging protocol. To address these, this will involve determining the optimal imaging time points to assess intratreatment response and establishing the appropriate test cutoff points that classify patients into the responder vs. nonresponder category. The aim, nevertheless, is to develop imaging biomarkers to permit response-predictive or response-adaptive therapy to move away from a one-size-fits-all approach towards personalised cancer care.

References

- [1] National Comprehensive Cancer Network (2016). Breast Cancer (Version 2.2016). [cited 2017 January 17, 2017]. Available at: https://www.nccn.org/professionals/physician_gls/f_guidelines.asp.
- [2] Garg, P. K., & Prakash, G. (2015). Current definition of locally advanced breast cancer. *Curr Oncol* 22(5), e409–e410.
- [3] Iqbal, J., Ginsburg, O., Rochon, P. A., Sun, P., & Narod, S. A. (2015). Differences in breast cancer stage at diagnosis and cancer-specific survival by race and ethnicity in the United States. *JAMA* 313(2), 165–173.
- [4] Cancer Research UK (2016). Proportion of Cancers Diagnosed at Each Stage, All Ages, England. 2016 [cited 2016 January 17 2017]. Available at: http://www.cancerresearchuk.org/sites/default/files/cstream-node/inc_stage_breast_0.pdf.
- [5] Newman, L. A. (2009). Epidemiology of locally advanced breast cancer. *Semin Radiat Oncol* 19(4), 195–203.
- [6] Tryfonidis, K., Senkus, E., Cardoso, M. J., & Cardoso, F. (2015). Management of locally advanced breast cancer—perspectives and future directions. *Nat Rev Clin Oncol* 12(3), 147–162.
- [7] Cancer Research UK (2016). Breast Cancer (C50): 2002–2006; Five-Year Relative Survival (%) by Stage, Adults Aged 15–99. Former Anglia Cancer Network. 2016 [cited 2016 January 17 2017]. Available at: http://www.cancerresearchuk.org/sites/default/files/cstream-node/surv_5yr_stage_w_breast_0.pdf.
- [8] Lee, M. C., & Newman, L. A. (2007). Management of patients with locally advanced breast cancer. *Surg Clin North Am* 87(2), 379–398, ix.
- [9] Alvarado-Cabrero, I., Alderete-Vazquez, G., Quintal-Ramirez, M., Patino, M., & Ruiz, E. (2009). Incidence of pathologic complete response in women treated with preoperative chemotherapy for locally advanced breast cancer: correlation of histology, hormone receptor status, Her2/Neu, and gross pathologic findings. *Ann Diagn Pathol* 13(3), 151–157.
- [10] Broadwater, J. R., Edwards, M. J., Kuglen, C., Hortobagyi, G. N., Ames, F. C., & Balch, C. M. (1991). Mastectomy following preoperative chemotherapy. Strict operative criteria control operative morbidity. *Ann Surg* 213(2), 126–129.
- [11] Chia, S., Swain, S. M., Byrd, D. R., & Mankoff, D. A. (2008). Locally advanced and inflammatory breast cancer. *J Clin Oncol* 26(5), 786–790.
- [12] Chen, A. M., Meric-Bernstam, F., & Hunt, K. K., et al. (2005). Breast conservation after neoadjuvant chemotherapy. *Cancer* 103(4), 689–695.
- [13] Cance, W. G., Carey, L. A., & Calvo, B. F., et al. (2002). Long-term outcome of neoadjuvant therapy for locally advanced breast carcinoma:

- effective clinical downstaging allows breast preservation and predicts outstanding local control and survival. *Ann Surg* 236(3), 295–302, discussion 302–3.
- [14] Honig, A., Rieger, L., Sutterlin, M., Wallwiener, D., Dietl, J., & Solomayer, E.-F. (2005). State of the art of neoadjuvant chemotherapy in breast cancer: rationale, results and recent developments. *Ger Med Sci* 3, Doc08.
- [15] von Minckwitz, G., Untch, M., & Blohmer, J. U., et al. (2012). Definition and impact of pathologic complete response on prognosis after neoadjuvant chemotherapy in various intrinsic breast cancer subtypes. *J Clin Oncol* 30(15), 1796–1804.
- [16] Kong, X., Moran, M. S., Zhang, N., Haffty, B., & Yang, Q. (2011). Meta-analysis confirms achieving pathological complete response after neoadjuvant chemotherapy predicts favourable prognosis for breast cancer patients. *Eur J Cancer* 47(14), 2084–2090.
- [17] Kuerer, H. M., Newman, L. A., & Smith, T. L., et al. (1999). Clinical course of breast cancer patients with complete pathologic primary tumor and axillary lymph node response to doxorubicin-based neoadjuvant chemotherapy. *J Clin Oncol* 17(2), 460–469.
- [18] Cholle, P., Amat, S., & Cure, H., et al. (2002). Prognostic significance of a complete pathological response after induction chemotherapy in operable breast cancer. *Br J Cancer* 86(7), 1041–1046.
- [19] Howlader, N., Altekruse, S. F., & Li, C. I., et al. (2014). US incidence of breast cancer subtypes defined by joint hormone receptor and HER2 status. *J Natl Cancer Inst* 106(5).
- [20] Carey, L. A., Dees, E. C., & Sawyer, L., et al. (2007). The triple negative paradox: primary tumor chemosensitivity of breast cancer subtypes. *Clin Cancer Res* 13(8), 2329–2334.
- [21] Rouzier, R., Perou, C. M., & Symmans, W. F., et al. (2005). Breast cancer molecular subtypes respond differently to preoperative chemotherapy. *Clin Cancer Res* 11(16), 5678–5685.
- [22] Sims, A. H., Howell, A., Howell, S. J., & Clarke, R. B. (2007). Origins of breast cancer subtypes and therapeutic implications. *Nat Clin Pract Oncol* 4(9), 516–525.
- [23] Desmedt, C., Haibe-Kains, B., & Wirapati, P., et al. (2008). Biological processes associated with breast cancer clinical outcome depend on the molecular subtypes. *Clin Cancer Res* 14(16), 5158–5165.
- [24] Polyak, K. (2011). Heterogeneity in breast cancer. *J Clin Invest* 121(10), 3786–3788.
- [25] Pietras, K., & Ostman, A. (2010). Hallmarks of cancer: interactions with the tumor stroma. *Exp Cell Res* 316(8), 1324–1331.
- [26] Swanton, C. (2012). Intratumor heterogeneity: evolution through space and time. *Cancer Res* 72(19), 4875–4882.
- [27] O'Connor, J. P., Rose, C. J., Waterton, J. C., Carano, R. A., Parker, G. J., & Jackson, A. (2015). Imaging intratumor heterogeneity: role in therapy response, resistance, and clinical outcome. *Clin Cancer Res* 21(2), 249–257.
- [28] Rofstad, E. K., Galappathi, K., & Mathiesen, B. S. (2014). Tumor interstitial fluid pressure—a link between tumor hypoxia, microvascular density, and lymph node metastasis. *Neoplasia* 16(7), 586–594.
- [29] Bold, R. J., Termuhlen, P. M., & McConkey, D. J. (1997). Apoptosis, cancer and cancer therapy. *Surg Oncol* 6(3), 133–142.
- [30] Mizutani, H., Tada-Oikawa, S., Hiraku, Y., Kojima, M., & Kawanishi, S. (2005). Mechanism of apoptosis induced by doxorubicin through the generation of hydrogen peroxide. *Life Sci* 76(13), 1439–1453.
- [31] Majno, G., & Joris, I. (1995). Apoptosis, oncosis, and necrosis. An overview of cell death. *Am J Pathol* 146(1), 3–15.
- [32] Chang, J., Ormerod, M., Powles, T. J., Allred, D. C., Ashley, S. E., & Dowsett, M. (2000). Apoptosis and Proliferation as Predictors of Chemotherapy Response in Patients with Breast Carcinoma. *Cancer* 89(11), 2145–2152.
- [33] Ellis, P. A., Smith, I. E., McCarthy, K., Detre, S., Salter, J., & Dowsett, M. (1997). Preoperative chemotherapy induces apoptosis in early breast cancer. *Lancet* 349(9055), 849.
- [34] Buchholz, T. A., Davis, D. W., & McConkey, D. J., et al. (2003). Chemotherapy-induced apoptosis and Bcl-2 levels correlate with breast cancer response to chemotherapy. *Cancer J* 9(1), 33–41.
- [35] Arends, M. J., & Wyllie, A. H. (1991). Apoptosis: mechanisms and roles in pathology. *Int Rev Exp Pathol* 32, 223–254.
- [36] Mesner Jr., P. W., Budihardjo II, & Kaufmann, S. H. (1997). Chemotherapy-induced apoptosis. *Adv Pharmacol* 41, 461–499.
- [37] Kolios, M. C., Czarnota, G. J., Lee, M., Hunt, J. W., & Sherar, M. D. (2002). Ultrasonic spectral parameter characterization of apoptosis. *Ultrasound Med Biol* 28(5), 589–597.
- [38] Jain, R. K. (2005). Normalization of tumor vasculature: an emerging concept in antiangiogenic therapy. *Science* 307(5706), 58–62.
- [39] Dvorak, H. F., Nagy, J. A., Dvorak, J. T., & Dvorak, A. M. (1988). Identification and characterization of the blood vessels of solid tumors that are leaky to circulating macromolecules. *Am J Pathol* 133(1), 95–109.
- [40] Gilbert, L. A., & Hemann, M. T. (2010). DNA damage-mediated induction of a chemoresistant niche. *Cell* 143(3), 355–366.
- [41] Junttila, M. R., & de Sauvage, F. J. (2013). Influence of tumour micro-environment heterogeneity on therapeutic response. *Nature* 501(7467), 346–354.
- [42] Hashizume, H., Baluk, P., & Morikaw, S., et al. (2000). Openings between defective endothelial cells explain tumor vessel leakiness. *Am J Pathol* 156(4), 1363–1380.
- [43] Damia, G., & Garattini, S. (2014). The pharmacological point of view of resistance to therapy in tumors. *Cancer Treat Rev* 40(8), 909–916.
- [44] Minchinton, A. I., & Tannock, I. F. (2006). Drug penetration in solid tumours. *Nat Rev Cancer* 6(8), 583–592.
- [45] Jain, R. K. (2013). Normalizing tumor microenvironment to treat cancer: bench to bedside to biomarkers. *J Clin Oncol* 31(17), 2205–2218.
- [46] Eisenhauer, E. A., Therasse, P., & Bogaerts, J., et al. (2009). New response evaluation criteria in solid tumours: revised RECIST guideline (version 1.1). *Eur J Cancer* 45(2), 228–247.
- [47] Belli, P., Costantini, M., & Ierardi, C., et al. (2011). Diffusion-weighted imaging in evaluating the response to neoadjuvant breast cancer treatment. *Breast J* 17(6), 610–619.
- [48] O'Flynn, E. A., & DeSouza, N. M. (2011). Functional magnetic resonance: biomarkers of response in breast cancer. *Breast Cancer Res* 13(1), 204.
- [49] Martincich, L., Bertotto, I., & Montemurro, F., et al. (2011). Variation of breast vascular maps on dynamic contrast-enhanced MRI after primary chemotherapy of locally advanced breast cancer. *AJR Am J Roentgenol* 196(5), 1214–1218.
- [50] Fan, B., Wang, X. Y., Yang, X. D., Zhong, H., Wu, C. X., & Jiang, X. X. (2011). Blood oxygen level-dependent MRI for the monitoring of neoadjuvant chemotherapy in breast carcinoma: initial experience. *Magn Reson Imaging* 29(2), 153–159.
- [51] Jiang, L., Weatherall, P. T., McColl, R. W., Tripathy, D., & Mason, R. P. (2013). Blood oxygenation level-dependent (BOLD) contrast magnetic resonance imaging (MRI) for prediction of breast cancer chemotherapy response: a pilot study. *J Magn Reson Imaging* 37(5), 1083–1092.
- [52] Padhani, A. R. (2002). Functional MRI for anticancer therapy assessment. *Eur J Cancer* 38(16), 2116–2127.
- [53] Baek, H. M., Chen, J. H., & Nie, K., et al. (2009). Predicting pathologic response to neoadjuvant chemotherapy in breast cancer by using MR imaging and quantitative ¹H MR spectroscopy. *Radiology* 251(3), 653–662.
- [54] Tozaki, M., Sakamoto, M., Oyama, Y., Maruyama, K., & Fukuma, E. (2010). Predicting pathological response to neoadjuvant chemotherapy in breast cancer with quantitative ¹H MR spectroscopy using the external standard method. *J Magn Reson Imaging* 31(4), 895–902.
- [55] Mankoff, D. A., Dunnwald, L. K., & Gralow, J. R., et al. (2002). Blood flow and metabolism in locally advanced breast cancer: relationship to response to therapy. *J Nucl Med* 43(4), 500–509.
- [56] Lodge, M. A., Carson, R. E., Carrasquillo, J. A., Whatley, M., Libutti, S. K., & Bacharach, S. L. (2000). Parametric images of blood flow in oncology PET studies using [¹⁵O]water. *J Nucl Med* 41(11), 1784–1792.
- [57] Cerussi, A., Shah, N., Hsiang, D., Durkin, A., Butler, J., & Tromberg, B. J. (2006). In vivo absorption, scattering, and physiologic

- properties of 58 malignant breast tumors determined by broadband diffuse optical spectroscopy. *J Biomed Opt* 11(4), 044005.
- [58] Cerussi, A., Berger, A. J., & Bevilacqua, F., et al. (2001). Sources of absorption and scattering contrast for near-infrared optical mammography. *Acad Radiol* 8(3), 211–218.
- [59] Cerussi, A., Tanamai, V. W., Hsiang, D., Butler, J., Mehta, R. S., & Tromberg, B. J. (2011). Diffuse optical spectroscopic imaging correlates with final pathological response in breast cancer neoadjuvant chemotherapy. *Philos Trans A Math Phys Eng Sci* 369(1955), 4512–4530.
- [60] Intes, X. (2005). Time-domain optical mammography SoftScan: initial results. *Acad Radiol* 12(8), 934–947.
- [61] Fantini, S., & Sassaroli, A. (2012). Near-infrared optical mammography for breast cancer detection with intrinsic contrast. *Ann Biomed Eng* 40(2), 398–407.
- [62] Hayashi, M., Yamamoto, Y., & Ibusuki, M., et al. (2012). Evaluation of tumor stiffness by elastography is predictive for pathologic complete response to neoadjuvant chemotherapy in patients with breast cancer. *Ann Surg Oncol* 19(9), 3042–3049.
- [63] Schrader, J., Gordon-Walker, T. T., & Aucott, R. L., et al. (2011). Matrix stiffness modulates proliferation, chemotherapeutic response, and dormancy in hepatocellular carcinoma cells. *Hepatology* 53(4), 1192–1205.
- [64] Evans, A., Armstrong, S., & Whelehan, P., et al. (2013). Can shear-wave elastography predict response to neoadjuvant chemotherapy in women with invasive breast cancer? *Br J Cancer* 109(11), 2798–2802.
- [65] Shia, W. C., Chen, D. R., Huang, Y. L., Wu, H. K., & Kuo, S. J. (2015). Effectiveness of evaluating tumor vascularization using 3D power Doppler ultrasound with high-definition flow technology in the prediction of the response to neoadjuvant chemotherapy for T2 breast cancer: a preliminary report. *Phys Med Biol* 60(19), 7763–7778.
- [66] Lizzi, F. L., Astor, M., Feleppa, E. J., Shao, M., & Kalisz, A. (1997). Statistical framework for ultrasonic spectral parameter imaging. *Ultrasound Med Biol* 23(9), 1371–1382.
- [67] Hunt, J. W., Worthington, A. E., Xuan, A., Kolios, M. C., Czarnota, G. J., & Sherar, M. D. (2002). A model based upon pseudo regular spacing of cells combined with the randomisation of the nuclei can explain the significant changes in high-frequency ultrasound signals during apoptosis. *Ultrasound Med Biol* 28(2), 217–226.
- [68] Craciunescu, O. I., Blackwell, K. L., & Jones, E. L., et al. (2009). DCE-MRI parameters have potential to predict response of locally advanced breast cancer patients to neoadjuvant chemotherapy and hyperthermia: a pilot study. *Int J Hyperthermia* 25(6), 405–415.
- [69] Andrade, W. P., Lima, E. N., & Osorio, C. A., et al. (2013). Can FDG-PET/CT predict early response to neoadjuvant chemotherapy in breast cancer? *Eur J Surg Oncol* 39(12), 1358–1363.
- [70] Duch, J., Fuster, D., & Munoz, M., et al. (2009). 18F-FDG PET/CT for early prediction of response to neoadjuvant chemotherapy in breast cancer. *Eur J Nucl Med Mol Imaging* 36(10), 1551–1557.
- [71] Roblyer, D., Ueda, S., & Cerussi, A., et al. (2011). Optical imaging of breast cancer oxyhemoglobin flare correlates with neoadjuvant chemotherapy response one day after starting treatment. *Proc Natl Acad Sci U S A* 108(35), 14626–14631.
- [72] Cerussi, A., Hsiang, D., & Shah, N., et al. (2007). Predicting response to breast cancer neoadjuvant chemotherapy using diffuse optical spectroscopy. *Proc Natl Acad Sci U S A* 104(10), 4014–4019.
- [73] Jiang, S., Pogue, B. W., & Kaufman, P. A., et al. (2014). Predicting breast tumor response to neoadjuvant chemotherapy with diffuse optical spectroscopic tomography prior to treatment. *Clin Cancer Res* 20(23), 6006–6015.
- [74] Mourant, J. R., Canpolat, M., & Brocker, C., et al. (2000). Light scattering from cells: the contribution of the nucleus and the effects of proliferative status. *J Biomed Opt* 5(2), 131–137.
- [75] Ueda, S., Roblyer, D., & Cerussi, A., et al. (2012). Baseline tumor oxygen saturation correlates with a pathologic complete response in breast cancer patients undergoing neoadjuvant chemotherapy. *Cancer Res* 72(17), 4318–4328.
- [76] Wells, P. N., & Liang, H. D. (2011). Medical ultrasound: imaging of soft tissue strain and elasticity. *J R Soc Interf* 8(64), 1521–1549.
- [77] Martinoli, C., Derchi, L. E., Rizzatto, G., & Solbiati, L. (1998). Power Doppler sonography: general principles, clinical applications, and future prospects. *Eur Radiol* 8(7), 1224–1235.
- [78] Czarnota, G. J., Kolios, M. C., & Abraham, J., et al. (1999). Ultrasound imaging of apoptosis: high-resolution non-invasive monitoring of programmed cell death in vitro, in situ and in vivo. *Br J Cancer* 81(3), 520–527.
- [79] Sadeghi-Naini, A., Sannachi, L., & Pritchard, K., et al. (2014). Early prediction of therapy responses and outcomes in breast cancer patients using quantitative ultrasound spectral texture. *Oncotarget* 5(11), 3497–3511.
- [80] Tadayyon, H., Sannachi, L., & Gange, M. J., et al. (2017). A priori Prediction of Neoadjuvant Chemotherapy Response and Survival in Breast Cancer Patients using Quantitative Ultrasound. *Scientific Rep* 7, 45733.
- [81] Haralick, R. M., Shanmugam, K., & Dinstein, I. (1973). Textural features for image classification. *IEEE Trans Syst Man Cybernetics* 3, 610–621.
- [82] Davnall, F., Yip, C. S., & Ljungqvist, G., et al. (2012). Assessment of tumor heterogeneity: an emerging imaging tool for clinical practice? *Insights Imaging* 3(6), 573–589.
- [83] Li, H., Giger, M. L., Olopade, O. I., Margolis, A., Lan, L., & Chinander, M. R. (2005). Computerized texture analysis of mammographic parenchymal patterns of digitized mammograms. *Acad Radiol* 12(7), 863–873.
- [84] Chen, W., Giger, M. L., Li, H., Bick, U., & Newstead, G. M. (2007). Volumetric texture analysis of breast lesions on contrast-enhanced magnetic resonance images. *Magn Reson Med* 58(3), 562–571.
- [85] Lerski, R. A., Straughan, K., Schad, L. R., Boyce, D., Bluml, S., & Zuna, I. (1993). MR image texture analysis—an approach to tissue characterization. *Magn Reson Imaging* 11(6), 873–887.
- [86] Chicklore, S., Goh, V., Siddique, M., Roy, A., Marsden, P. K., & Cook, G. J. (2013). Quantifying tumour heterogeneity in 18F-FDG PET/CT imaging by texture analysis. *Eur J Nucl Med Mol Imaging* 40(1), 133–140.
- [87] Yang, X., Tridandapani, S., & Beitler, J. J., et al. (2012). Ultrasound GLCM texture analysis of radiation-induced parotid-gland injury in head-and-neck cancer radiotherapy: an in vivo study of late toxicity. *Med Phys* 39(9), 5732–5739.
- [88] Castellano, G., Bonilha, L., Li, L. M., & Cendes, F. (2004). Texture analysis of medical images. *Clin Radiol* 59(12), 1061–1069.
- [89] Gibbs, P., & Turnbull, L. W. (2003). Textural analysis of contrast-enhanced MR images of the breast. *Magn Reson Med* 50(1), 92–98.
- [90] Gupta, R., & Undrill, P. E. (1995). The use of texture analysis to delineate suspicious masses in mammography. *Phys Med Biol* 40(5), 835–855.
- [91] Sadeghi-Naini, A., Vorauer, E., & Chin, L., et al. (2015). Early detection of chemotherapy-refractory patients by monitoring textural alterations in diffuse optical spectroscopic images. *Med Phys* 42(11), 6130–6146.
- [92] Ahmed, A., Gibbs, P., Pickles, M., & Turnbull, L. (2013). Texture analysis in assessment and prediction of chemotherapy response in breast cancer. *J Magn Reson Imaging* 38(1), 89–101.
- [93] Gangeh, M. J., Tadayyon, H., Sannachi, L., Sadeghi-Naini, A., Tran, W. T., & Czarnota, G. J. (2016). Computer Aided Theragnosis Using Quantitative Ultrasound Spectroscopy and Maximum Mean Discrepancy in Locally Advanced Breast Cancer. *IEEE Trans Med Imaging* 35(3), 778–790.
- [94] Eccles, S. A., Aboagye, E. O., & Ali, S., et al. (2013). Critical research gaps and translational priorities for the successful prevention and treatment of breast cancer. *Breast Cancer Res* 15(5), R92.
- [95] Cooper, R. S., & Psaty, B. M. (2003). Genomics and medicine: distraction, incremental progress, or the dawn of a new age? *Ann Intern Med* 138(7), 576–580.

- [96] Chin, L., Andersen, J. N., & Futreal, P. A. (2011). Cancer genomics: from discovery science to personalized medicine. *Nat Med* 17(3), 297–303.
- [97] Wang, L., McLeod, H. L., & Weinshilboum, R. M. (2011). Genomics and drug response. *N Engl J Med* 364(12), 1144–1153.
- [98] Straver, M. E., Glas, A. M., & Hannemann, J., et al. (2010). The 70-gene signature as a response predictor for neoadjuvant chemotherapy in breast cancer. *Breast Cancer Res Treat* 119(3), 551–558.
- [99] Paik, S., Shak, S., & Tang, G., et al. (2004). A multigene assay to predict recurrence of tamoxifen-treated, node-negative breast cancer. *N Engl J Med* 351(27), 2817–2826.
- [100] Paik, S., Tang, G., & Shak, S., et al. (2006). Gene expression and benefit of chemotherapy in women with node-negative, estrogen receptor-positive breast cancer. *J Clin Oncol* 24(23), 3726–3734.
- [101] Sparano, J. A., Gray, R. J., & Makower, D. F., et al. (2015). Prospective Validation of a 21-Gene Expression Assay in Breast Cancer. *N Engl J Med* 373(21), 2005–2014.
- [102] Carlson, J. J., & Roth, J. A. (2013). The impact of the Oncotype Dx breast cancer assay in clinical practice: a systematic review and meta-analysis. *Breast Cancer Res Treat* 141(1), 13–22.
- [103] O'Connor, J. P., Aboagye, E. O., & Adams, J. E., et al. (2017). Imaging biomarker roadmap for cancer studies. *Nat Rev Clin Oncol* 14(3), 169–186.